

# Walking the Walk: Striving for Net Zero Construction





# INTRODUCTION



## RESPONSIBILITIES

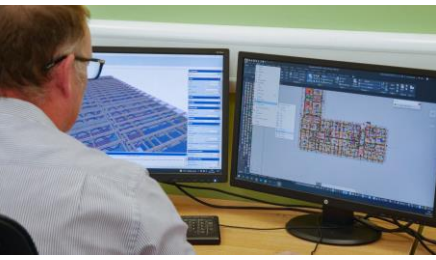
- Production Efficiency & Continuous Improvement
- Business Development & Customer Engagement
- R&D Low-Carbon Materials and Technology
- Concept design and testing
- Walk around with a piece of paper looking busy



**Richard Hawkins**  
*Technical Innovations Manager*  
*Business Development*



# INTRODUCTION - WHO ARE SO MODULAR?



Open & Closed Panel

Volumetric Modular

Cassettes & Trusses





## OSM – What is it?

**Modular Building** – where a building is made up of sub components that are pieced together on site

**OSM** – where some of all the core processes of building construction are conducted offsite in a controlled factory environment.



# OSM – why and how?

## Why manufacture off site?

- Greater process control
- Improved output
- Avoid weather related delays
- Improved performance & quality
- Safer
- Reduction of costs
- Reduction of embodied carbon
- Reduction of waste



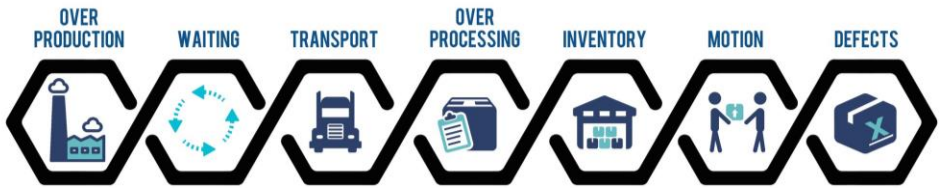
## How are these advantages achieved?

- Product and process standardisation
- Repeatable processes
- Automation
- Division of labour
- Specialisation of workforce
- Economies of scale
- Renewable Energy Sourcing
- In-house training and development





# Adopting a Manufacturing Mindset



## 7 WASTES OF LEAN

# Sustainable Approaches to Modular Construction

Shop Local



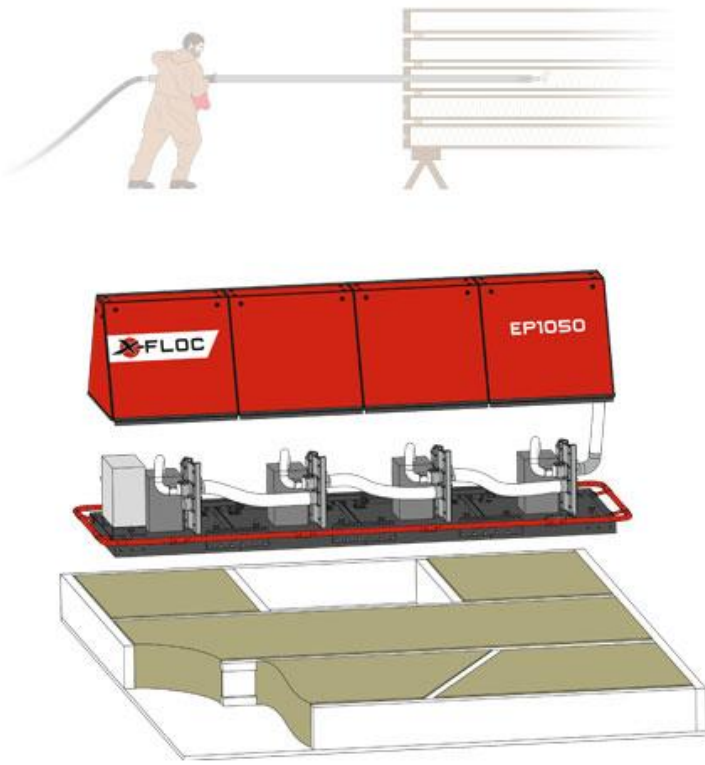
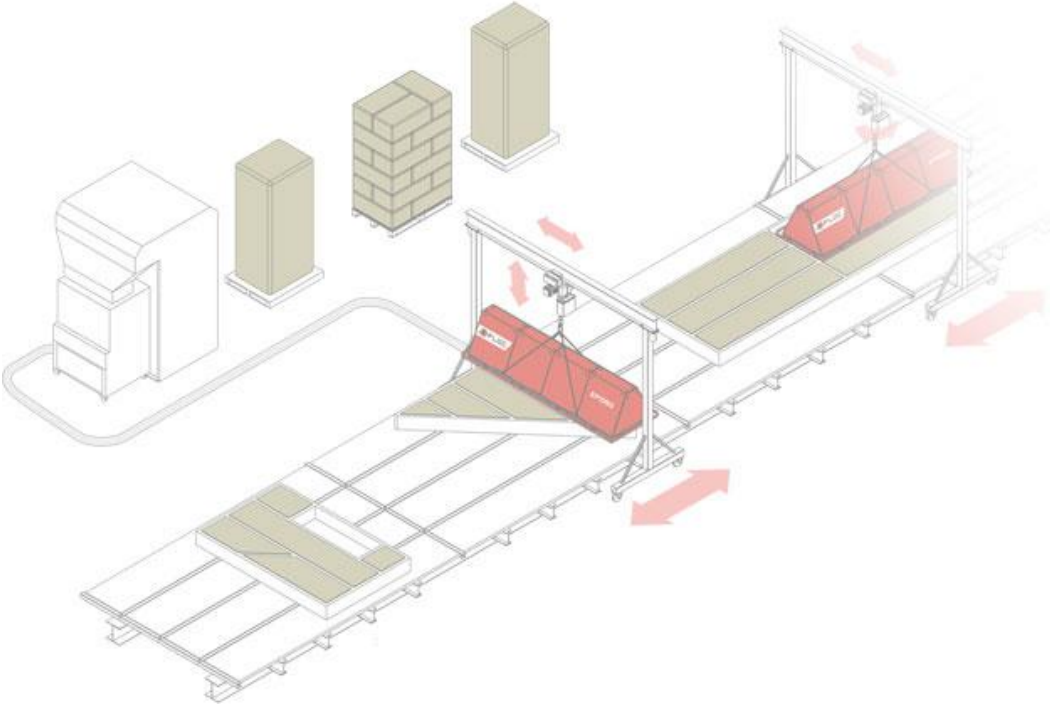
Efficient Transport



Natural Materials



Low carbon footprint - Fast process - No VOCs





# Automating Environmentalism



Development of Standardised Closed Panel Wall Type - Further expansion of capacity









# Company Benefits: Winning County Flats: Retrofit to Existing Dwellings & Modular Apartments

- £13.5M retrofit / New build Scheme in Sandfields Aberavon
- Low carbon volumetric modular design
- Innovative Natural insulation (Welsh wool and wood fibre batts)
- A comparative building performance case study for 3 insulation options.
- Leading the way in large scale bio material development





# Company Benefits: Design, DfM, Manufacturing & Erection of Modular Buildings



Cardiff  
Metropolitan  
University



Llywodraeth Cymru  
Welsh Government

**Innovate UK**  
Knowledge Transfer Network



## ANY QUESTIONS ?



[Link Us: SoModular](#)



[Gram Us: SoModular](#)



[Tweet Us: SoModular](#)



[FB Us: SOModular](#)

Sevenoaks Modular  
JCG Building  
Milland Road Industrial Estate,  
Neath  
Neath Port Talbot  
SA11 1NJ

### CONTACT US!



Tel: 01639 620 240

E-mail:

[info@somodular.co.uk](mailto:info@somodular.co.uk)

Web: [www.somodular.co.uk](http://www.somodular.co.uk)

